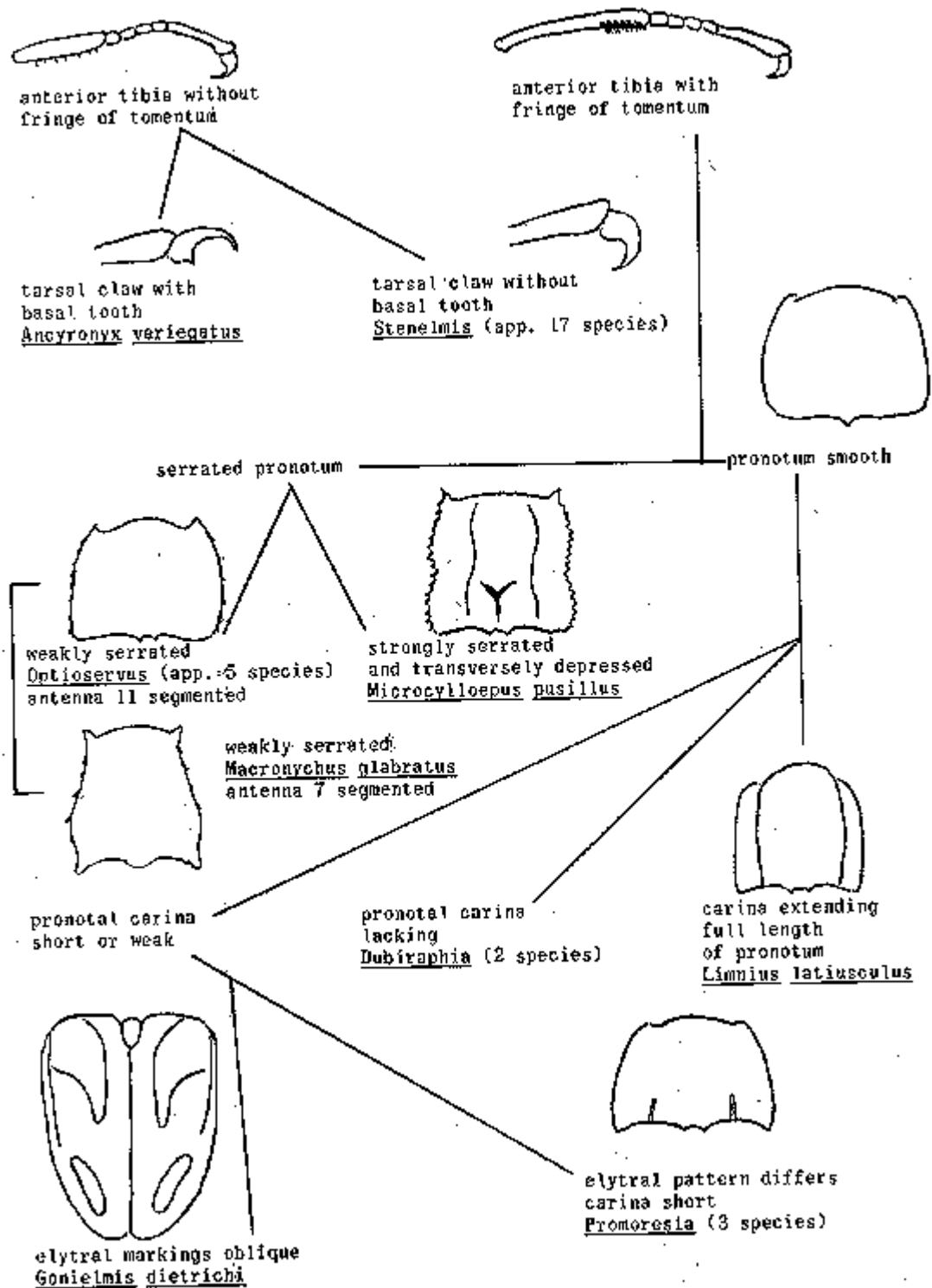
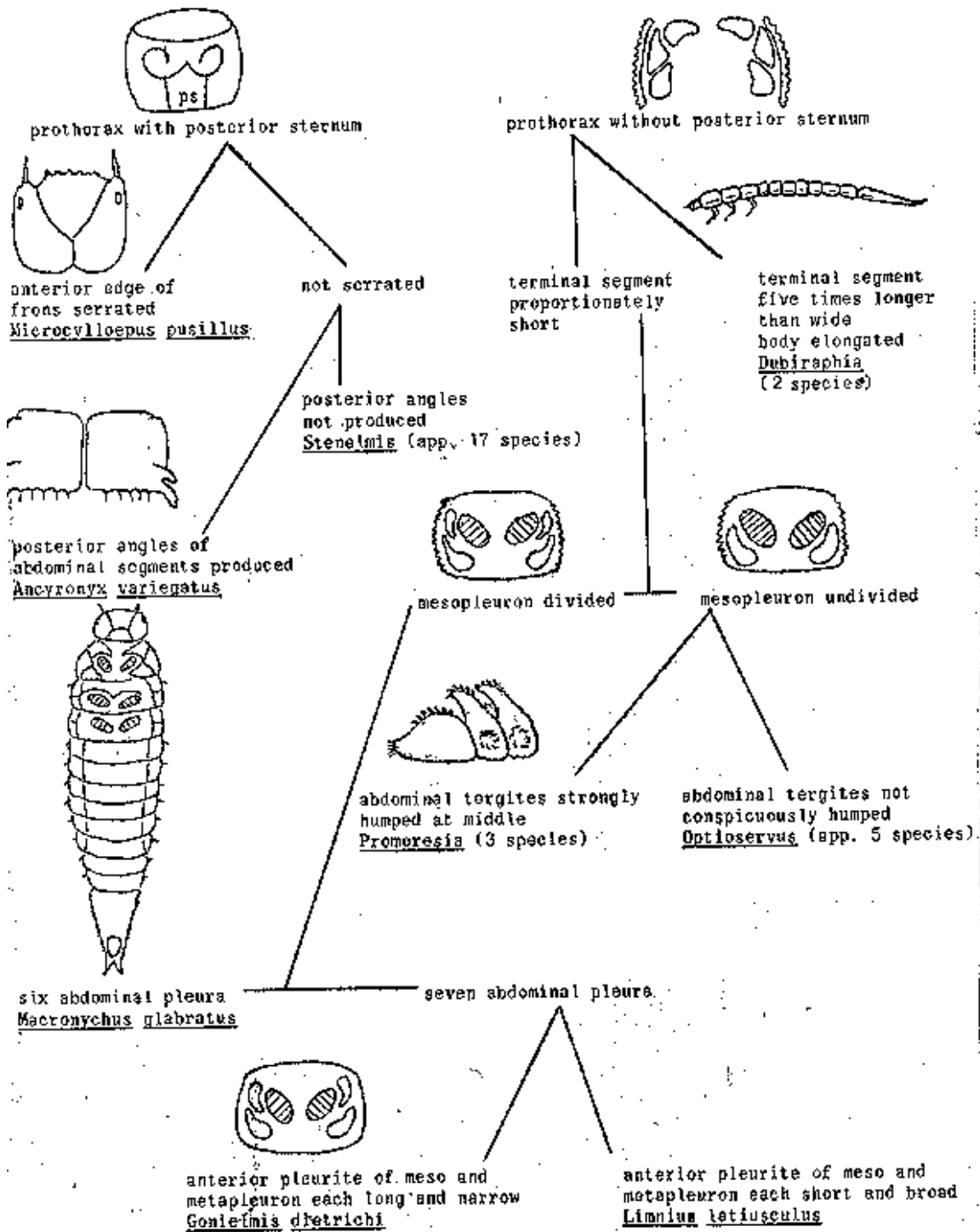


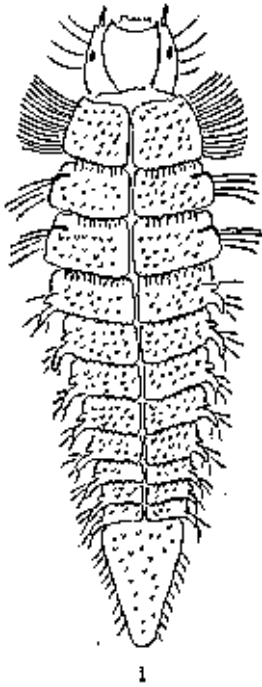
KEY TO THE RIFFLE BEETLES, FAMILY ELMIDAE (Coleoptera) ADULTS



KEY TO THE RIPPLE BEETLES, FAMILY ELMIDAE (Coleoptera) LARVAE



LARVAL CHARACTERS OF SELECTED ELMIDAE  
(1 - 13)



Ancyronyx variegatus

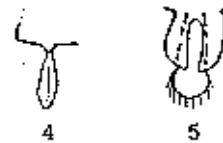


Macronychus glabretus

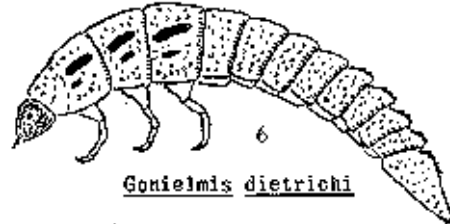
Microcviliceps pusillus  
(first abdominal tergite)



(posterior tergal spines)

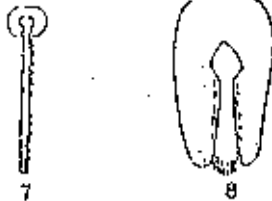


Microcviliceps      Optioservus sp.



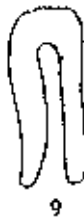
Gonielmis dietrichi

(posterior tergal spines)



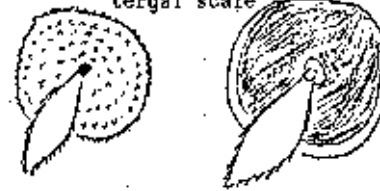
Macronychus

Gonielmis

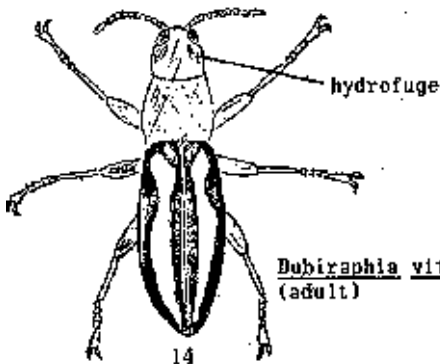


Promoresia

tergal scale

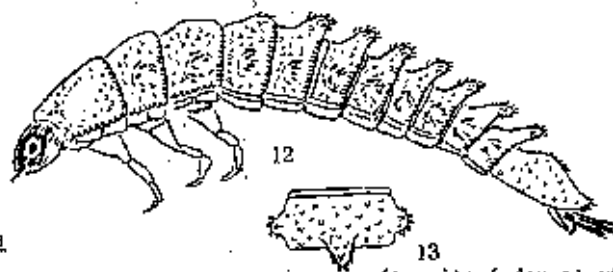


Gonielmis



Dubiraphia vittata  
(adult)

Gonielmis dietrichi



(tergite 6 dorsal view)

Promoresia (elegans ?)

Limnius letiusculus